

# CERTIFICATE OF LOCATION OF GOVERNMENT CORNER

NORTHEAST Corner of Section 16, Township 105 N., Range 42 W., 5 th P.M.

STATE OF MINNESOTA, County of MURRAY

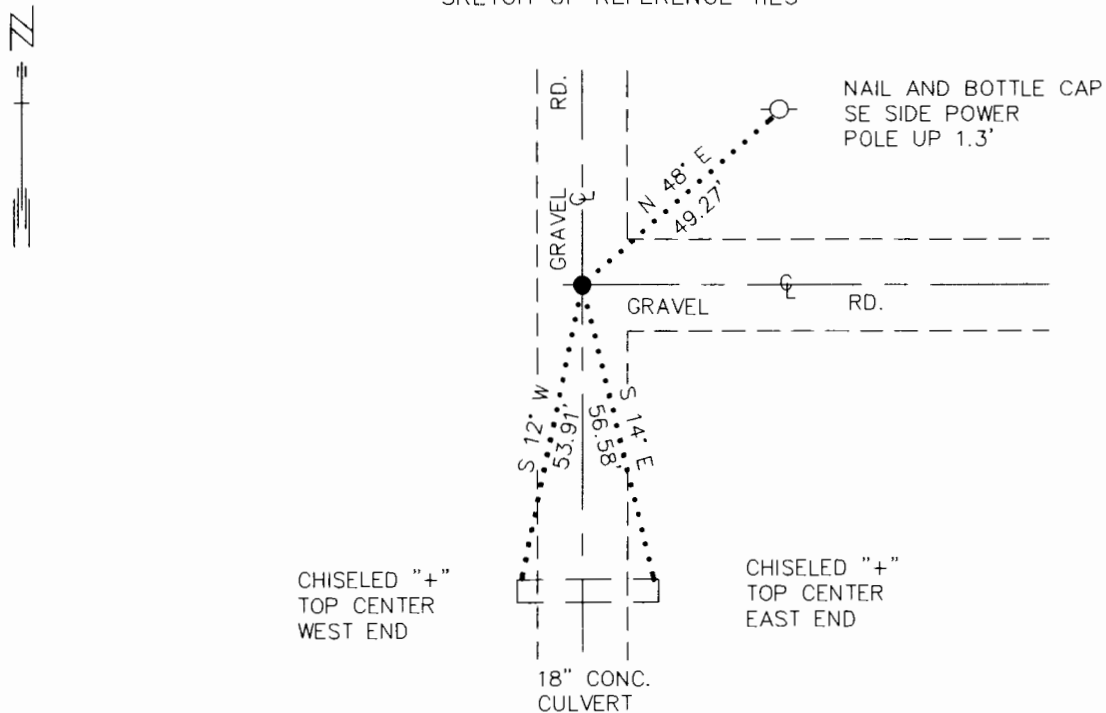
At the corner location shown on the sketch:

On 8/18/92 found a RAILROAD SPIKE SET OVER STONE, DOWN 2.5'  
DATE

left monument as found,  lowered monument,  removed monument (explain)

On 8/18/92 Placed a 3/4" X 24" REBAR WITH ALUMINUM CAP STAMPED  
DATE "MN DNR SURVEY MARKER", DOWN 0.5' IN PLACE OF RAILROAD SPIKE

SKETCH OF REFERENCE TIES



1983 MURRAY COUNTY  
COORDINATE SYSTEM  
N = 121268.248  
E = 469140.732

BEARINGS OBSERVED WITH COMPASS

Statement of evidence relative to this corner location is on back of page. 10/7/92  
WMA01187.00.00.01

I hereby certify that this document and the data contained herein was prepared by me or under my direct supervision.

*Lowell R. Pomeroy* 10-26-92  
SIGNATURE DATE

Registration No. 17005

- Land Surveyor,  Professional Engineer
- County Surveyor,  County Engineer

OFFICE OF THE COUNTY RECORDER

County of MURRAY

I hereby certify that this document was filed in the Co. recorders office at \_\_\_\_\_ .M. on the \_\_\_\_\_ day of OCT 27 1992 A.D., 19\_\_\_\_

County Recorder *James V. Johnson*

By \_\_\_\_\_, Deputy

DOCUMENT NO. \_\_\_\_\_

Northeast Corner Section 16, Township 105 North, Range 42 West

The DNR Bureau of Engineering contacted the following offices for information on this corner:

MN Secretary of State  
Murray County Recorder and Highway Engineer  
Moseng Land Surveying at Marshall  
Madsen Land Surveying at Fairmont

- 1861 The U.S. General Land Office notes, on file in the Secretary of State's Office, show the corner marked with a post, made mound with trench and pits as per instructions.
- 1930 Surveyor's Record Book A, on file in the County Recorder's Office, on page 359, states the following; "Found old stone, placed two pieces of concrete on top and stone on top of concrete. 10 x 12 x 20".  
Also written on this page is a note, no date, that says: "stone 2'6" SW of line between two fence corners". Three reference ties are shown.
- 1932 Surveyor's Record Book A, on file in the County Recorder's Office, on page 375, states the following; "old corner F. cor 47.5' N.W. & F. cor 47.5' S.E. stone 2.6 SW of line between SE & NW fence cors". Corner is shown 2683 ft. from the north quarter corner Section 16.  
A copy of this survey is also on file in the County Highway Engineer's Office. However a distance of 2668 ft is shown to the north quarter corner Section 16.
- 1969 August, the DNR Bureau of Engineering conducted a search for this corner, dug a hole and down 2.5 ft found a stone. Set a railroad spike over the stone. Searched for, but did not find the record ties. Took four new ties.
- 1979 On the above mentioned Highway Engineer's copy of page 375, Surveyor's Record Book, the following is stated; "Located R/R spike 3" below grade; likely set by Wildlife Conservation Survey". Two ties are shown.
- 1992 August 18, the DNR Bureau of Engineering conducted a search for this corner and found the railroad spike set in 1969. Searched for and found a record tie which agrees with the railroad spike. Removed the spike and placed a DNR Survey marker in its place.

Analysis of the available information led the DNR Bureau of Engineering to conclude that the railroad spike over the found stone marks the location of the corner.